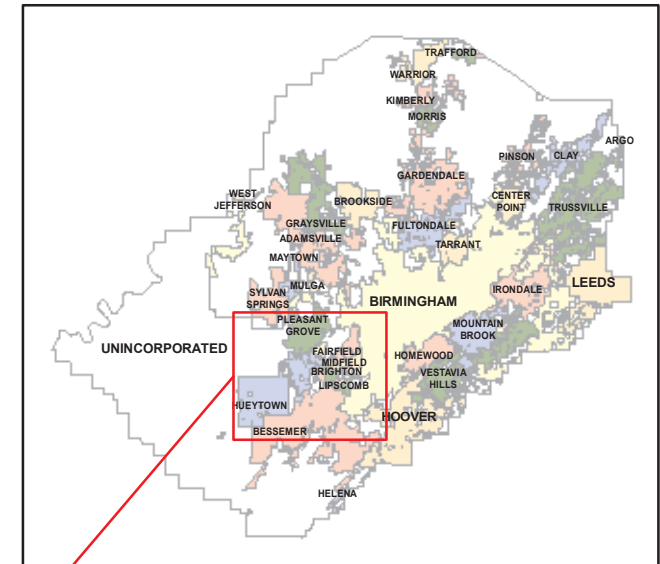


**AREAS OF GREATEST NEEDS
JEFFERSON COUNTY, ALABAMA**







Prepared by

Shelia Smoot - Commissioner of Technology

Wayne M. Cree, Chief Information Officer
John B. Halbert Jr., GIS Manager
Department of Information Technology

Map Creation Date: 10/27/2008

Legend

-  ELIGIBLE BLOCK GROUPS
-  ELIGIBLE INCORPORATED AREA
-  ELIGIBLE UNINCORPORATED AREA
-  INELIGIBLE AREA

144.00 CENSUS TRACT NUMBER

1 CENSUS BLOCK GROUP NUMBER

Jefferson County Information Technology, GIS Division, has prepared this data.
Disclaimer: Any use of this data shall be at the sole risk of the person or entity using it. Jefferson County makes no warranty, expressed or implied, as to the accuracy of the information represented herein. This data shall be accepted, AS IS, WITH ALL FAULTS. Any person, entity, or company that makes use of this data shall hold harmless Jefferson County, its elected officials, employees, and agents from and against any claim, damage, loss, action, cause of action, or liability arising from the use of this GIS product.